



Apt 207 Phoenix, 72 Chapeltown Street, Manchester, M1 2EY

Stunning, design led one bedroom apartment by Capital & Centric. With an abundance of modern industrial style and benefitting from a private balcony AND residents garden, bike storage and onsite concierge, Phoenix apartments is one NOT to be missed! Achieving a high yield makes this a great investment.

Second Floor, open plan aspect, with storage options carefully considered. Laminate flooring throughout with kitchen/ living space complete with top spec integrated appliances, including full size dishwasher and fridge freezer and benefitting from a south facing balcony. Bedroom area with wardrobe & built in shelving. Furniture Included. Council Tax Band B. EPC Rating B. No parking.

Offers Over £180,000

Viewing arrangements

Viewing strictly by appointment through the agent

245 Deansgate, Manchester, M3 4EN 0161 833 9499 opt 3

Entrance Hallway

Wooden flooring. Airing cupboard. Includes a LG 9KG Washer/dryer

Living Room/Kitchen

18'0" x 12'4"

Range of wall and base units with worktops over. Sink with mixer tap. Cooker with hob and extractor over. Integrated dishwasher and fridge/freezer. TV and telephone point. Wall mounted heater. Balcony.

Bedroom

9'9" x 8'11"

Wooden flooring. Wall mounted heater. Fitted unit for storage, and also additional alcove to fit a wardrobe.

Bathroom

Low level W/C. Sink with mixer tap. Bath with mixer shower over. Spotlights. Fitted mirror. Heated towel rail.

Externally

Lifts to all floors. Access to communal courtyard which has BBQs and bluetooth speakers. Concierge.

Additional Information

Ground rent - £301 per annum

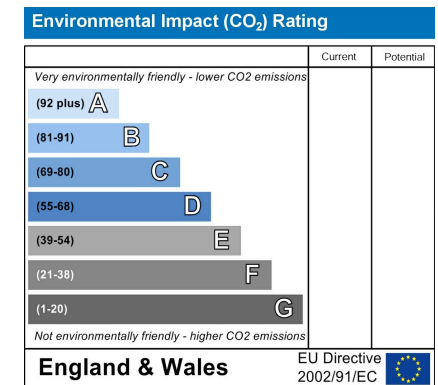
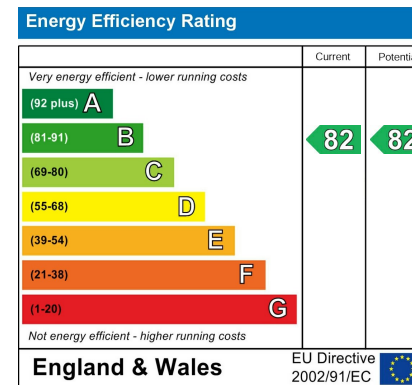
Service charges - £202 PCM

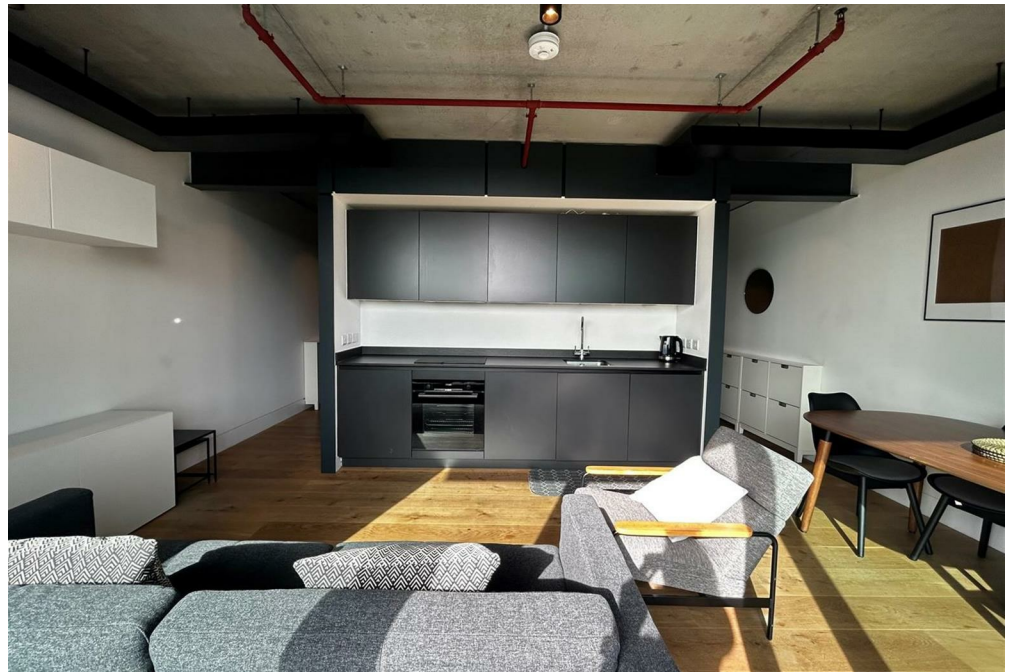
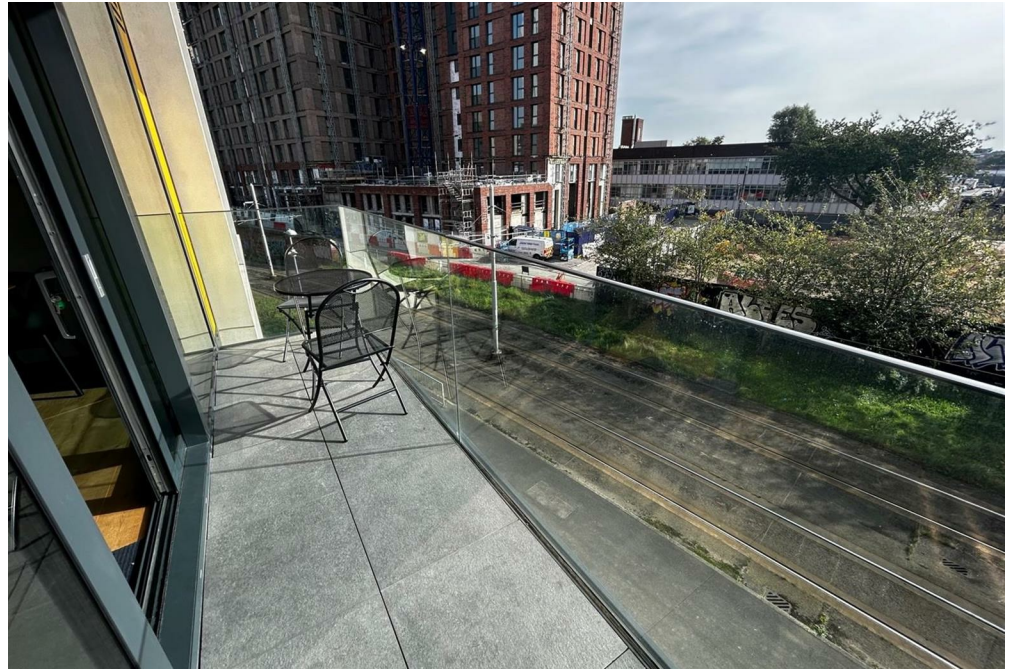
Lease - 250 years from 2015

Managing agents - Zenith

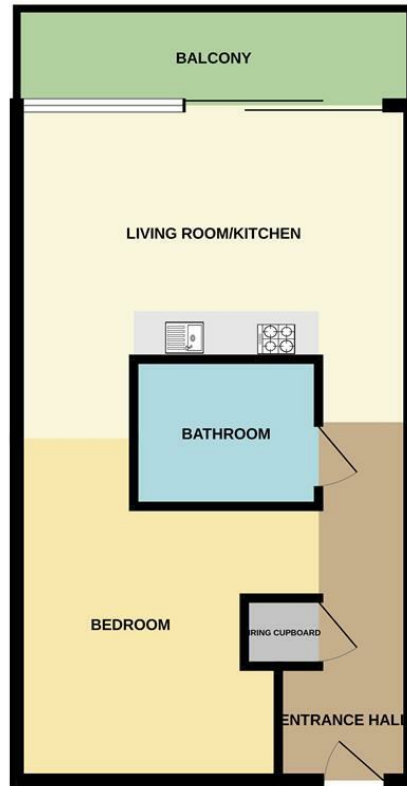
Agent Note

To be able to purchase a property in the United Kingdom all agents have a legal requirement to conduct Identity checks on all customers involved in the transaction to fulfil their obligations under Anti Money Laundering regulations. We outsource this check to a third party and a charge will apply. Ask the branch for further details.





2ND FLOOR



Measurements are approximate. Not to scale. Illustrative purposes only.
Made with Metropix ©2024



These particulars are believed to be accurate but they are not guaranteed and do not form a contract. Neither Jordan Fishwick nor the vendor or lessor accept any responsibility in respect of these particulars, which are not intended to be statements or representations of fact and any intending purchaser or lessee must satisfy himself by inspection or otherwise as to the correctness of each of the statements contained in these particulars. Any floorplans on this brochure are for illustrative purposes only and are not necessarily to scale.

Offices at: Chorlton, Didsbury, Disley, Hale, Glossop, Macclesfield, Manchester Deansgate, Manchester Whitworth Street, New Mills, Sale, Wilmslow and Withington

245 Deansgate, Manchester, M3 4EN

0161 833 9499 opt 3

manchester@jordanfishwick.co.uk

www.jordanfishwick.co.uk

